

INSTALLATION INSTRUCTIONS

GENERAL:

The modules can preferably be welded to load carrier and foundation, which eliminates problems of getting holes on top and bottom lined up. Or, for example, bolted on top and welded on bottom. The modules are delivered as separate parts and need to be assembled with dummy load cell before start instalation. (FIGURE 1)

INSTALLATION - WELDED MODULE:

1. Position the preassembled modules (with dummy) on the foundation plates and put on the load carrier as shown in FIGURE 2
2. Weld modules on top and bottom as shown on FIGURE 2
3. Loosen the lift off protection bolt as far as possible. position the locknut in the middle section of the lift off protection bolt.
4. For one module at a time, lift the load carrier slightly 6-8 mm to allow removal of the dummy load cell. Lifting is preferably done with a hydraulic jack positioned in suitable position close to the module.

CAUTION - observe the lift off protection bolts while lifting. when the bolt head + washer touches the bottom mounting plate, stop lifting and repeat step 3

5. Remove ONLY the dummy load cell and replace with the load cell.
6. Lower the load carrier onto load cell and remove the jack.

CAUTION - observe the lift off protection bolts while lowering. tighten the bolts as the load carrier is lowered

7. Set the "lift off gap" (G) to 2-3 mm and lock the lift off screw with the locknut
8. Repeat the procedure described in step 4 to step 7 for all weigh modules

INSTALLATION - BOLTED MODULE:

1. Fix the preassembled modules on the foundation plate using four(4) mounting bolts on the bottom plate and put the load carrier on the weigh module.
2. Mark all the hole positions for the bolts on load carrier.
3. Lift the load carrier, drill/tap on the marks and lower on the weigh module. Make sure the load carrier is properly aligned with the weigh module with respect to the mounting holes
4. For one module at a time, lift the load carrier slightly 20-25 mm to allow removal of the dummy load cell. Lifting is preferably done with a hydraulic jack positioned in suitable position close to the module.
5. Disassemble top plate from the lift off protection bolts and fix it to the load carrier.
6. Remove ONLY the dummy load cell and replace with the load cell.
7. Lower the load carrier onto load cell and remove the jack.

CAUTION - observe the lift off protection bolts while lowering. tighten the bolts as the load carrier is lowered.

REVISION	CHANGE DESCRIPTION	CR No.	DRAWN	APPROVED	DATE
1	For 10t capacity mounting bolt size (T2) was corrected as M12	ECR 2473	KAV		
2	T1, T2, OD names interchanged to match catalog. D3 added	ECR 3034	KAV		

INFORMATION - Use blocking (block height should be selected from the bellow table) while lowering the load carrier. This will allow the lift off protection bolts to easily engage with the top plate.

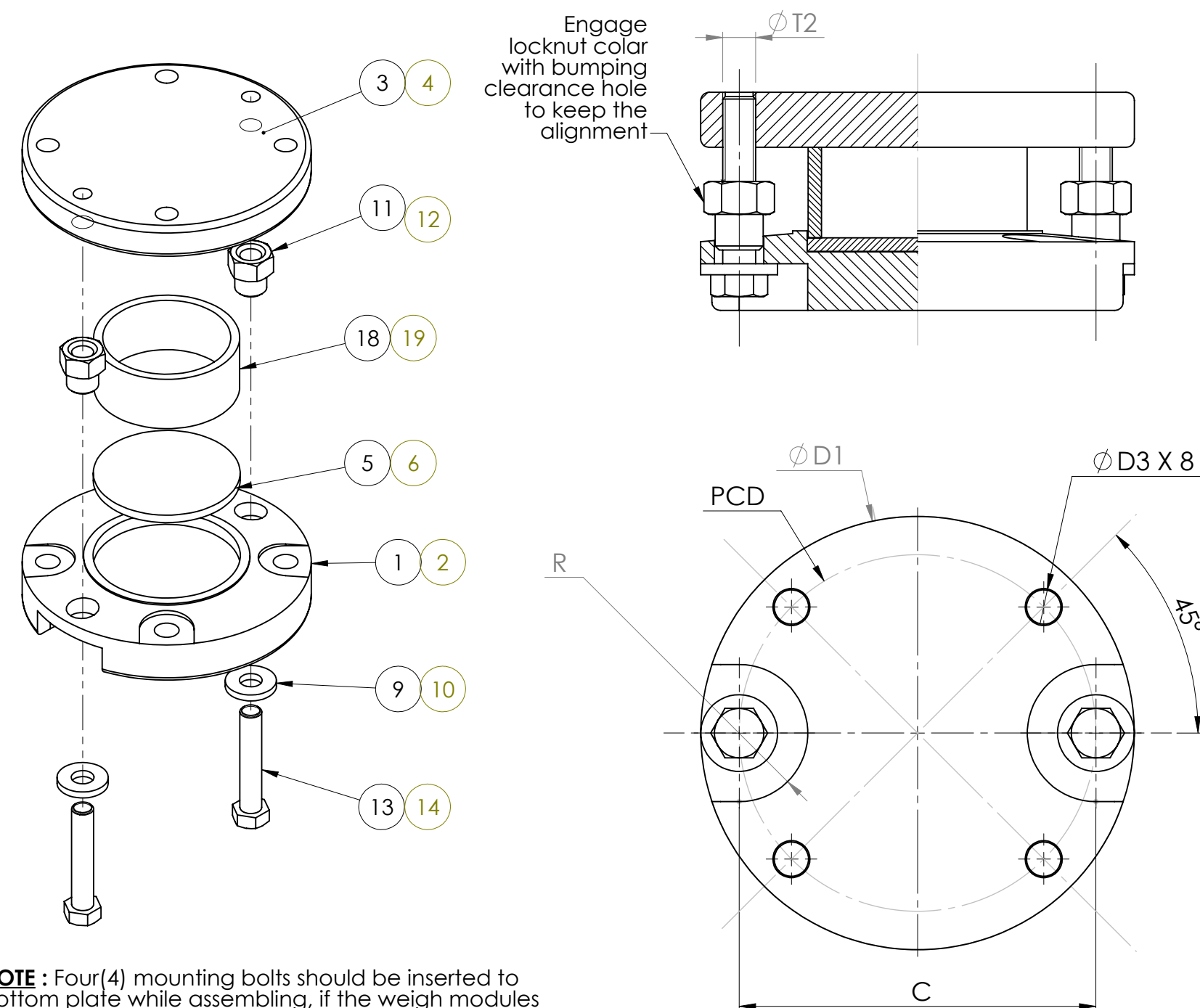
8. Set the "lift off gap" (G) to 2-3 mm and lock the lift off screw with the locknut
9. Repeat the procedure described in step 4 to step 7 for all weigh modules

RELATED DRAWINGS:

3-82725 - Outline drawing

Load cell type /Capacity	Part list - Mild steel	Part list - Stainless	PCD	D1	C	R	H1	H2	H3	S	T2	T1	D3	Q Nm	Block height mm	Weld size Xmm	Weld size Y mm	Max Lift off force kN	Max side force kN	Weight Excluding load cell kg
Q50/ 0.5 - 5t	4-82886-A	4-82886-B	130	158	130	25	79.5	29	20	17	M12	M12	13	50	95	6	4	50	50	6.25
Q50/ 10t	4-82887-A	4-82887-B	146	188	146	27.5	104	37	30	20	M16	M12	13	50	127	6	4	100	100	11.5
Q50/ 20 - 30t	4-82888-A	4-82888-B	185	228	185	35	124	42	32.5	20	M16	M16	17	121	150	8	6	150	150	19.5

FIGURE 1
PROCEDURE FOR ASSEMBLING THE WEIGH MODULE



NOTE : Four(4) mounting bolts should be inserted to bottom plate while assembling, if the weigh modules are installed by means of bolts.

FIGURE 2
WELDED MODULE FINALLY INSTALLED

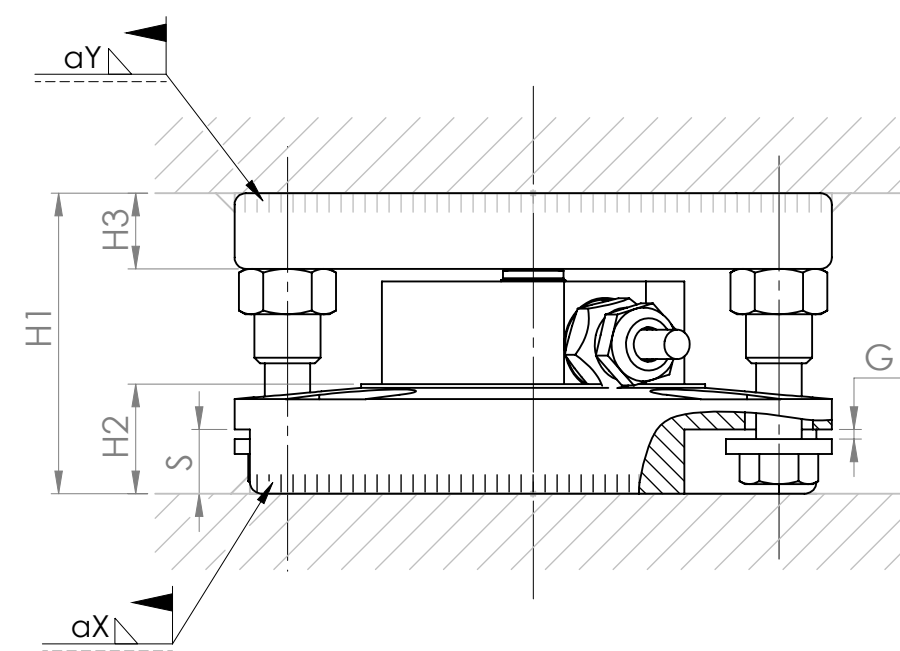
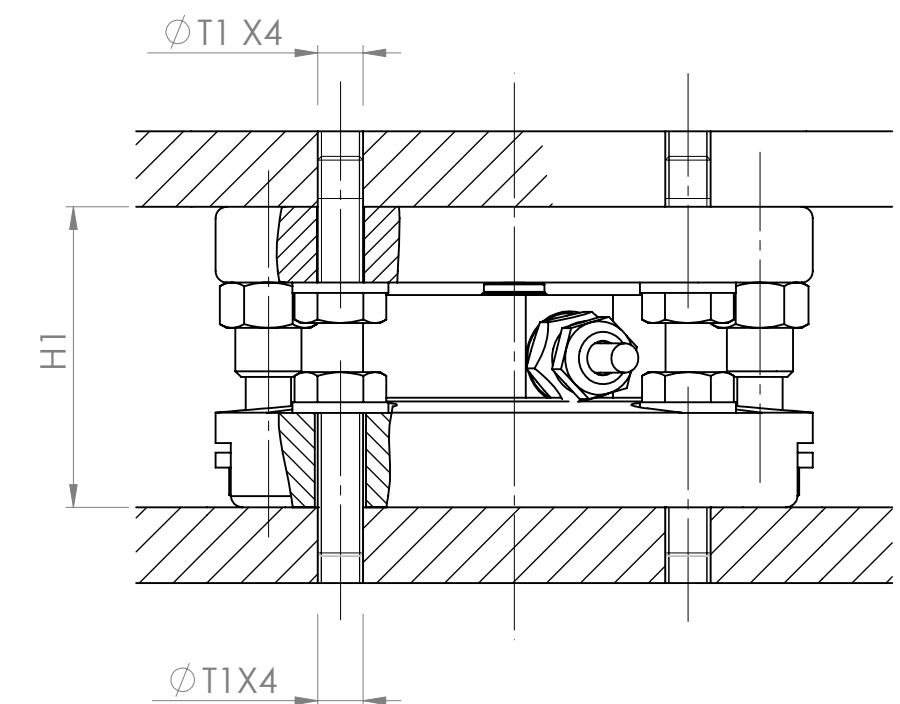


FIGURE 3
BOLTED MODULE FINALLY INSTALLED



NOTE : Mounting bolts thread T2 torqued at Q Nm

DIMENSIONS AND NOTES MARKED WITH (XX) ARE CLASSED AS A SIGNIFICANT CHARACTERISTIC.

DO NOT SCALE DRAWING
DEBUR AND BREAK SHARP EDGES

Drawn: KAV	Checked: HCA	First Issue Date: 27/08/2013
UNLESS OTHERWISE SPECIFIED: DIMENSIONS ARE IN MILLIMETRES TOLERANCES TO ISO 2768-m	Material:	Title: 66-20 Installation Instruction
© THIS DRAWING IS THE PROPERTY OF FLINTEC GROUP AB, AND MAY NOT BE REPRODUCED OR DISCLOSED TO A THIRD PARTY IN ANY FORM WITHOUT THE COMPANY'S WRITTEN PERMISSION.	Finish:	Dwg No.: 83012
		Rev.: 2
	SCALE:1:5	SHEET 1 OF 1