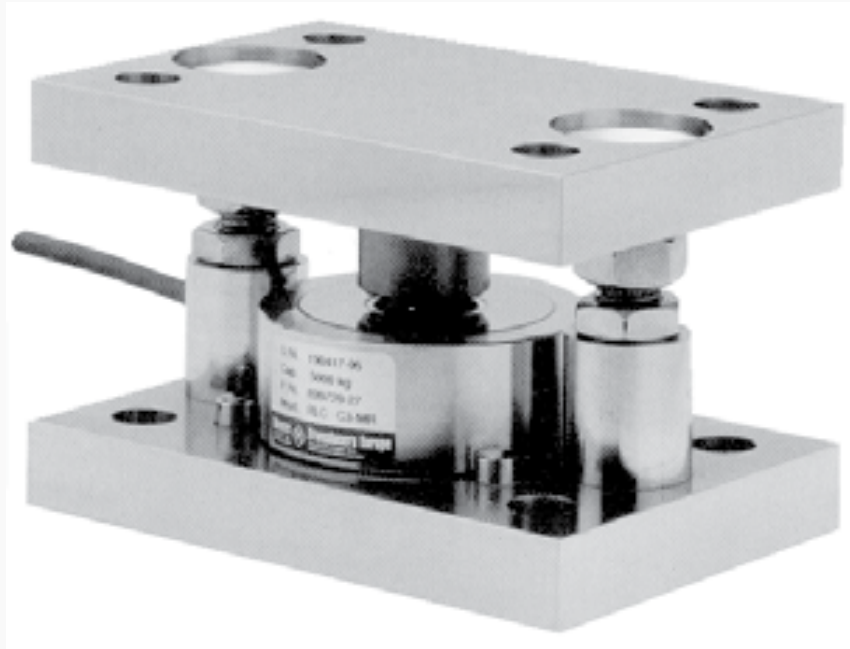


TM-RLC

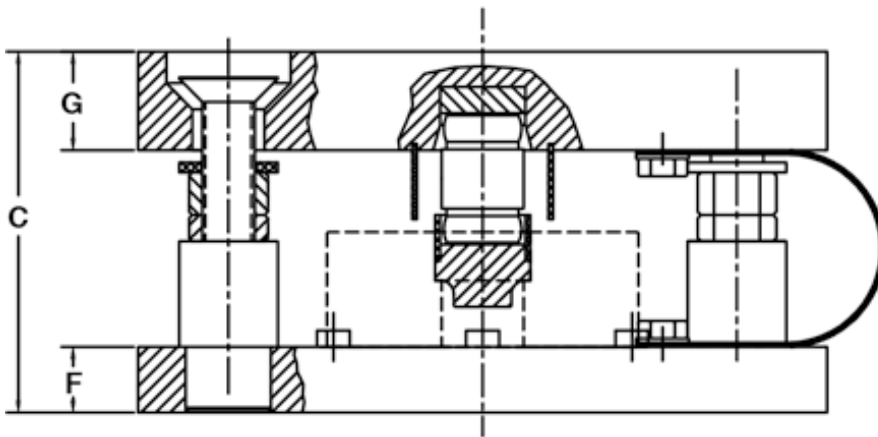
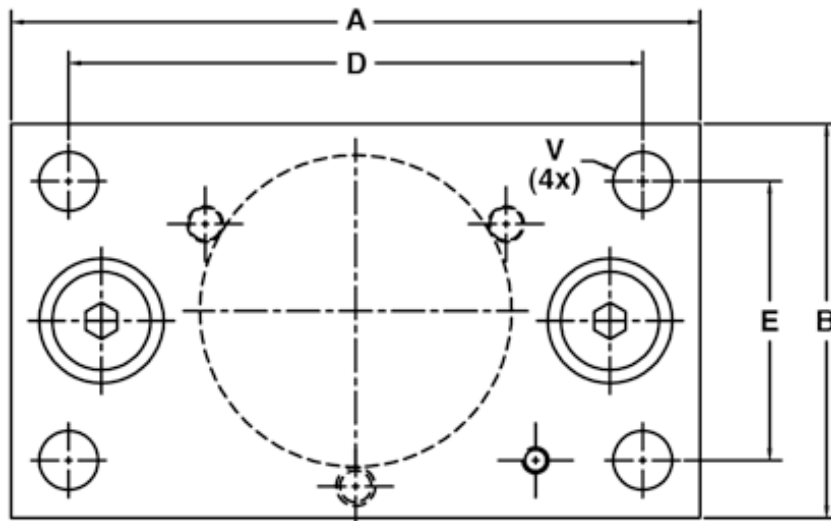
Tank Mount for Model RLC

SENSOR
TECHNIQUES LIMITED



Tank Mount for Model RLC

- Capacities between 0.25T and 10T
- Hardened components at all load bearing surfaces
- Built-in horizontal movement control and lift-off
- Rocker pin load introduction
- Stainless steel construction
- Load cell can be replaced after installation
- Ideal for tank and silo weighing



CAPACITY	0.5T, 1T	2T, 3.5T, 5T	10T
A	150	160	210
B	100	110	120
C	75	100	110
D	120	120	175
E	70	70	85
F	15	20	20
G	20	20	30
V	Ø13	Ø16	Ø18

Specifications are subject to change without prior notice

DS-TMRLC-1, 11/17