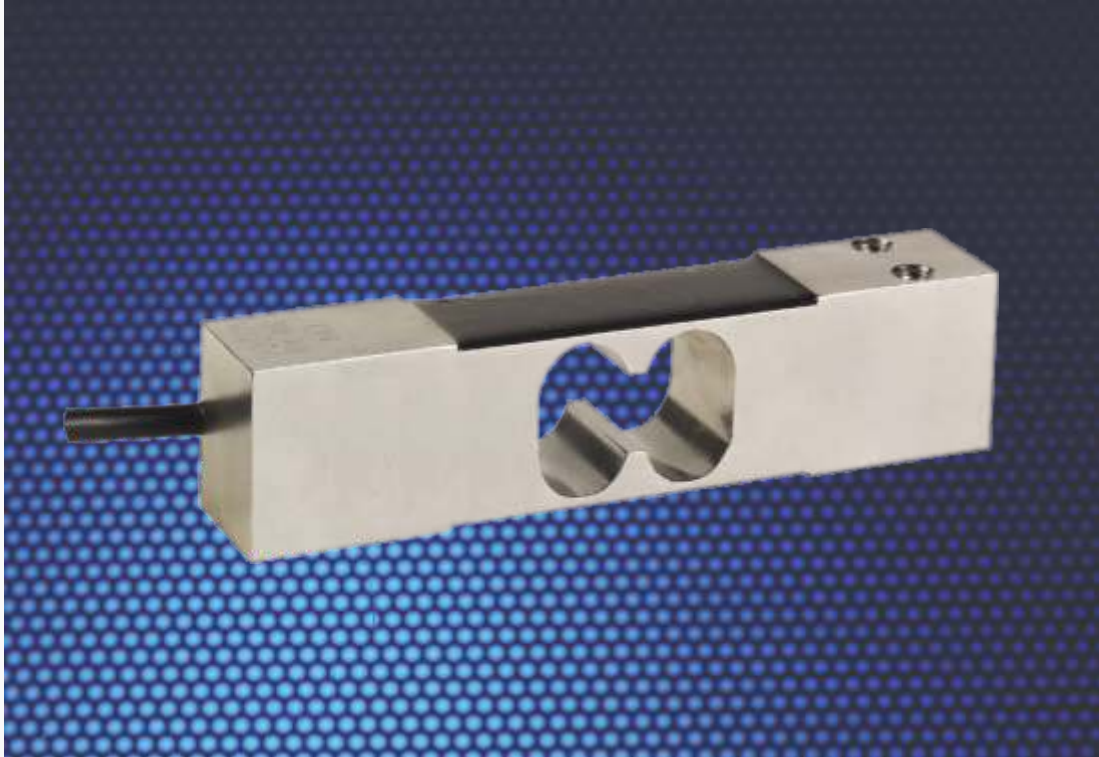


1130

Platform Load Cell

SENSOR
TECHNIQUES LIMITED



Platform Load Cell, Model 1130

- Approved to OIML R60 6000 D
- Maximum platform size 400 x 400 mm
- Available in capacity ranges from 7kg to 100kg
- Ideal for bench scale & process weighing applications
- Low profile stainless steel construction
- Sealed to IP66 by a special coating
- 6 wire cable with Sense and Drain connections
- Optional Hazardous area approval (ATEX) available

| GRADE | | E | G | C3 | C6** |
|--------------------------------|----------------|------------------------------------|-------|-------|--------|
| Number of Load Cell Intervals | n (max) | | | 3000 | 6000 |
| Minimum Utilisation | % Rated Cap. | | | 50 | 60 |
| Minimum Verification Interval | Vmin=Emax/. | | | 6000 | 10000 |
| Total Error | % Rated Load | 0.050 | 0.020 | 0.020 | 0.0100 |
| Zero Return after 30 mins | % Appl. Load | 0.050 | 0.017 | 0.017 | 0.0083 |
| Temperature Effect on : Span | %Appl. Ld./10K | 0.030 | 0.010 | 0.010 | 0.0058 |
| Zero | %ORL/10K | 0.100 | 0.023 | 0.023 | 0.0240 |
| Output at Rated Load (ORL) | mV/V | 2 | | | |
| Output at Rated Load Tolerance | % | ± 10 | | | |
| Input Impedance | Ohm | 385 ± 15 | | | |
| Output Impedance | Ohm | 350 ± 3 | | | |
| Recommended Supply Voltage | V | 10 | | | |
| Compensated Temp. Range | °C | -10 to +40 | | | |
| Operating Temperature Range | °C | -20 to +70 | | | |
| Deflection | mm | < 0.4 | | | |
| Safe Overload | % Rated Cap. | 150 | | | |
| Maximum Overload | % Rated Cap. | 200 | | | |
| Ultimate Overload | % Rated Cap. | 300 | | | |
| Cable Length | M | 1.5 | | | |
| Construction | | Stainless Steel | | | |
| Environmental Protection | | IP66 | | | |
| Rated Capacities (Emax) | Kg | 7, 10, 15, 20, 30, 35, 50, 75, 100 | | | |

** 7-35 Kg version C6 OIML approved

Dimensions

