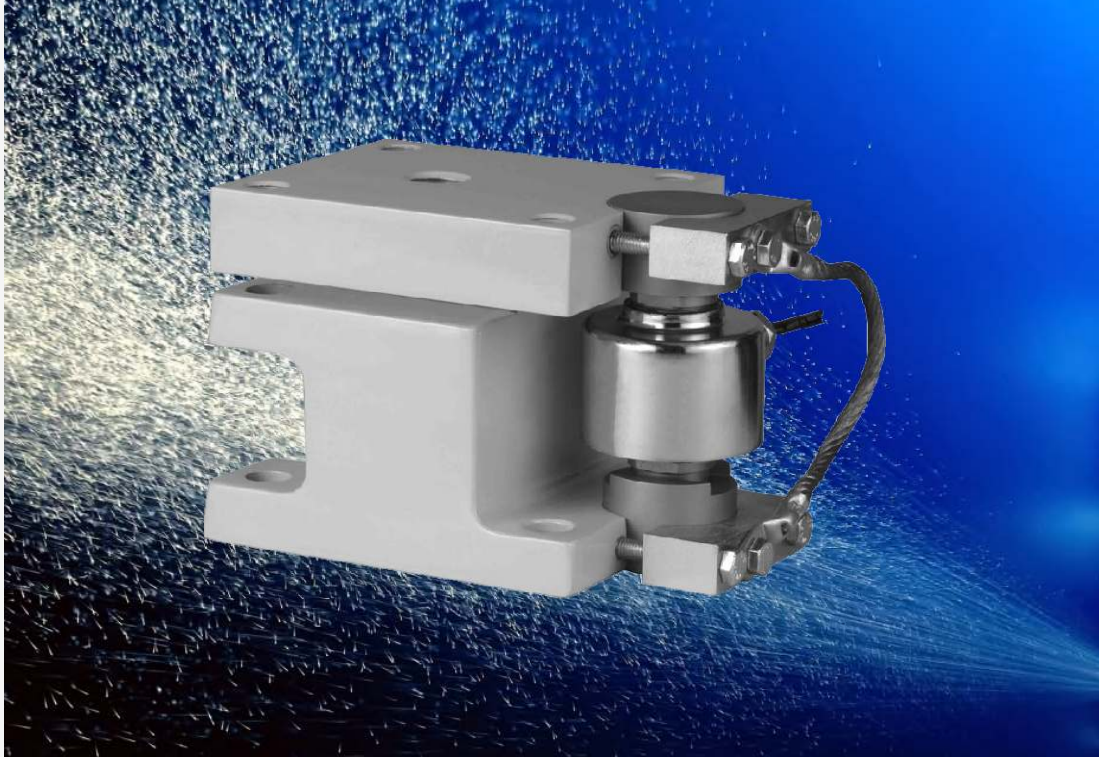


PHL1

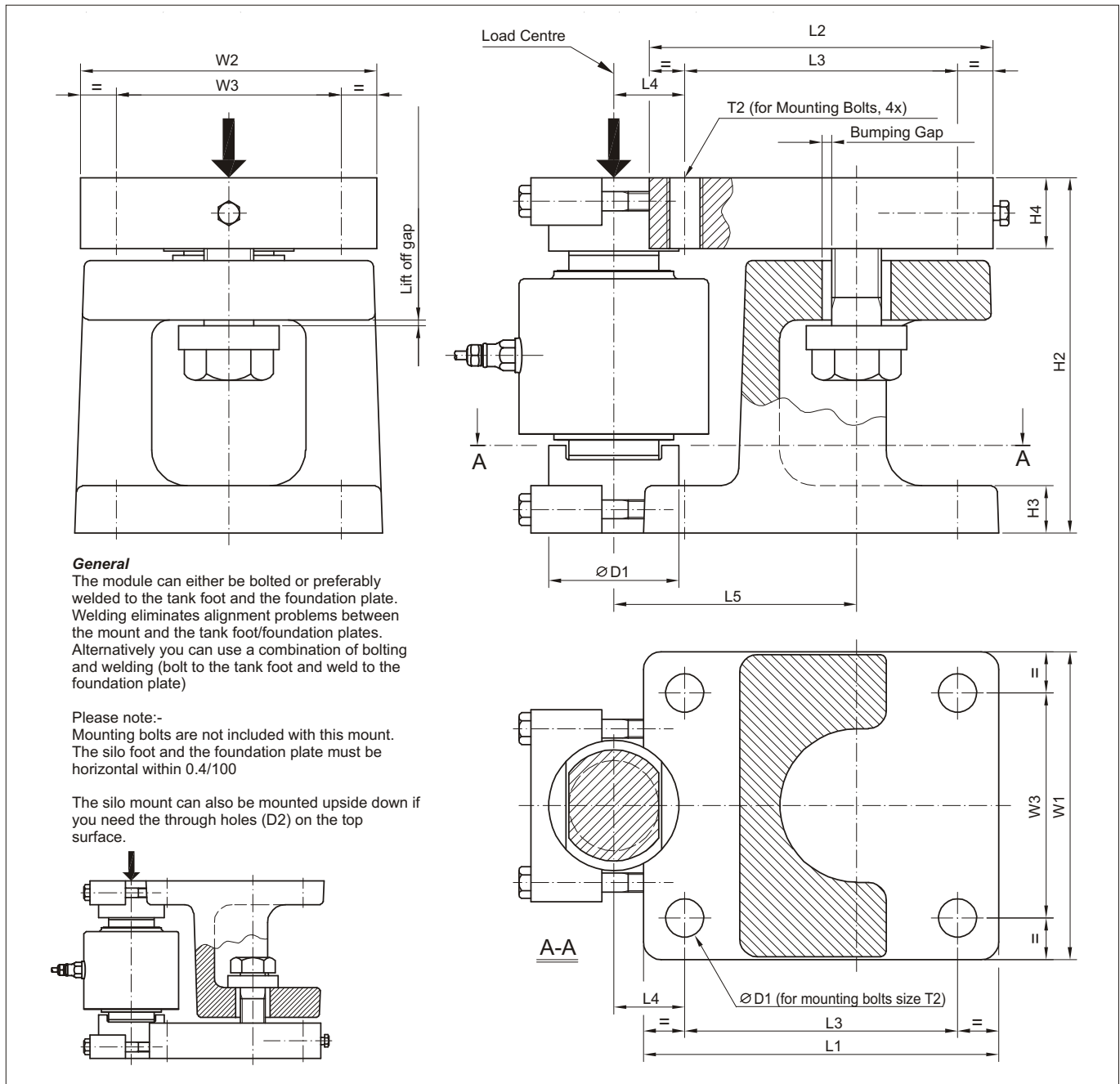
Silo Mount with Lift-Off Protection

SENSOR
TECHNIQUES LIMITED



Silo Mount with Lift-Off Protection

- Self Aligning Module with excellent load introduction
- Designed for Model SM63 Rocker Column Load Cell
- Capacities from 7.5 t to 300 t
- Ideal for hopper and tank weighing applications
- Integrated lift off and bumper stops
- Mild steel, zinc plated construction (7.5 t - 100 t)
- Cast mild steel, painted construction (150 t - 300 t)
- Easy to install



SM63 Load Cell Capacity	D1	D2	H2	H3	H4	L1	L2	L3	L4	L5	W1	W2	W3	S3	T2	Maximum Lift Off Force (kN)*	Maximum Side Load (kN)**	Weight excluding Load Cell (kg)
7,5t	50	17.5	130	20	30	166	160	130	25	100	136	130	100	5	M16	100	50	15
15t	50	17.5	130	20	30	166	160	130	25	100	136	130	100	5	M16	100	50	15
22,5t	50	17.5	130	20	30	166	160	130	25	100	136	130	100	5	M16	100	50	15
30t	60	22	200	28	40	220	210	170	30	125	160	150	110	6	M20	180	90	33
40 t	60	22	200	28	40	220	210	170	30	125	160	150	110	6	M20	180	90	33
50 t	85	26	250	34	50	260	250	200	45	165	210	200	150	7	M24	300	150	65
100 t	85	26	250	34	50	260	250	200	45	165	210	200	150	7	M24	300	150	65
150 t	110	33	300	40	60	300	290	230	60	205	260	250	190	8	M30	400	200	113
300 t	135	39	400	60	70	370	350	280	65	235	320	300	230	10	M36	600	300	225

* For a worst case, assume that the lift off force is taken by one module.
 ** In tank and silo applications with 3 or 4 modules, it is assumed that a minimum of 2 modules will equally share the actual side forces (wind) on the tank/silo.

All Dimensions in mm
 Specifications are subject to change without prior notice
 DSPHL1-2, 12/09