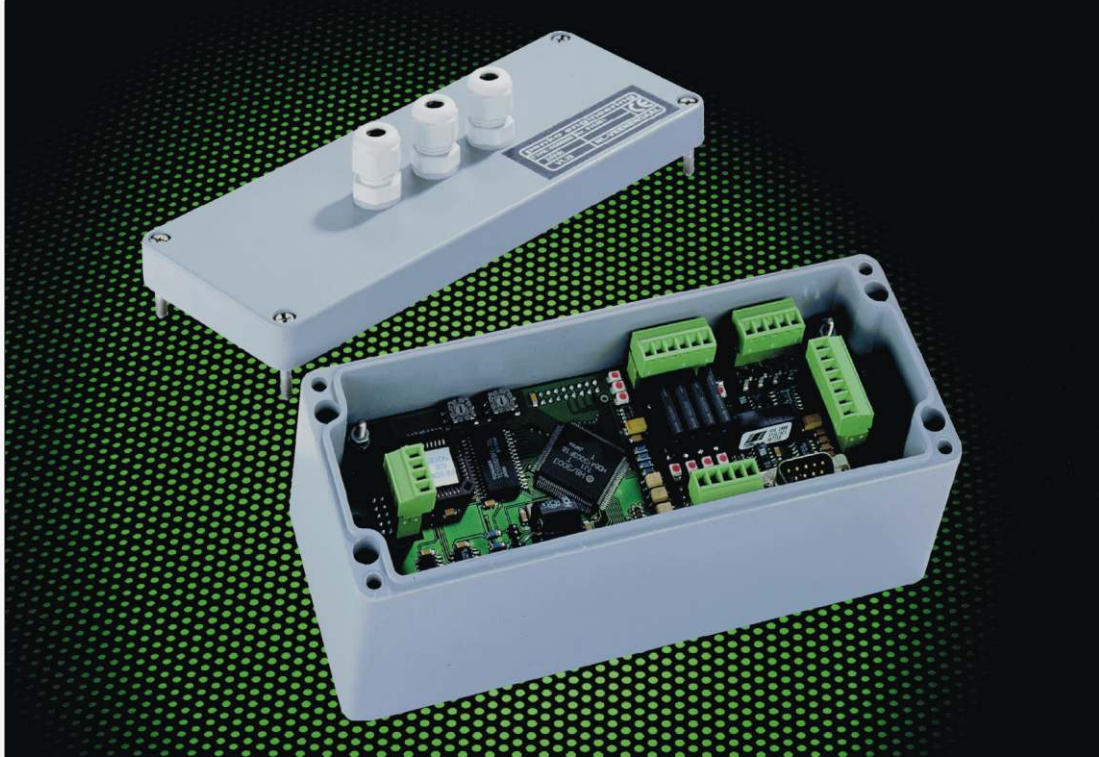


SGM 500

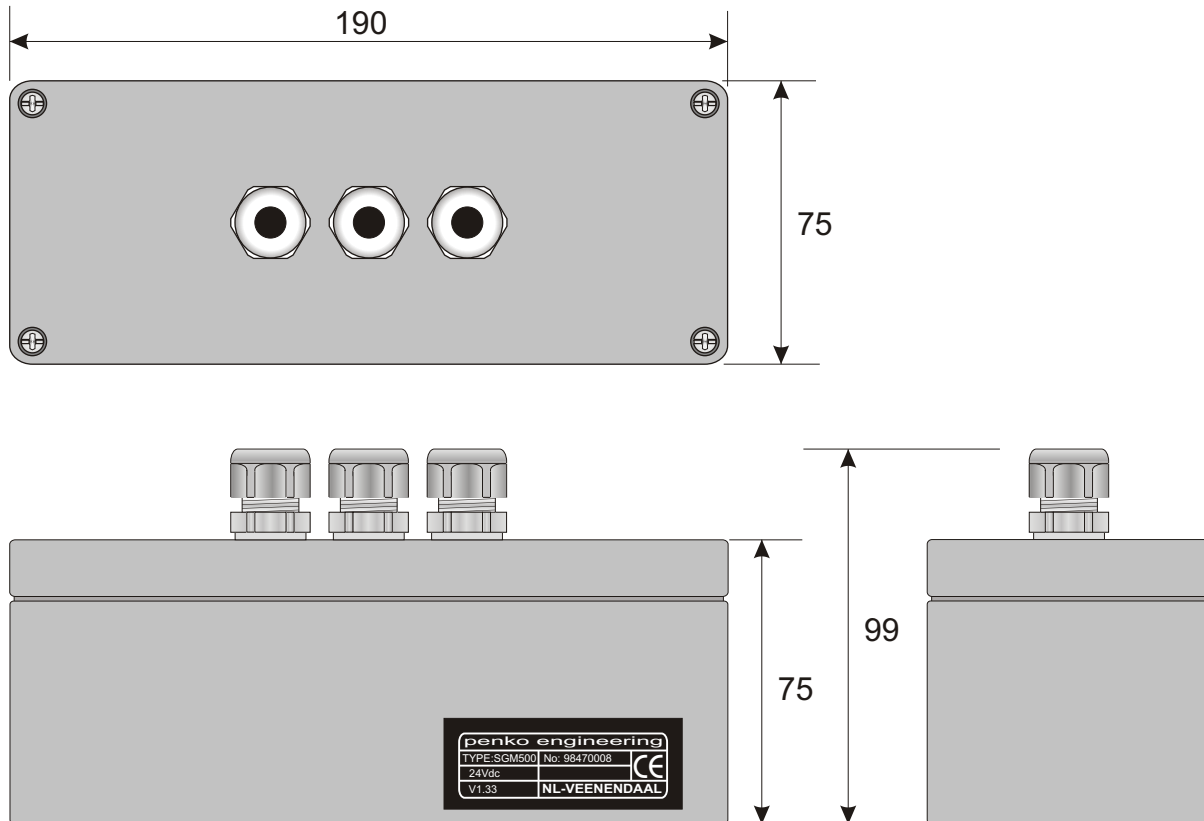
Strain Gauge Amplifier with Digital Control

SENSOR
TECHNIQUES LIMITED



Amplifier with digital control, Model SGM 500

- All weight indicator functions available
- Power supply 15 - 28 V dc
- Load Cell excitation 10V DC, with sense
- Will drive up to 4 Load Cells, 350 ohm
- 1000 conversions / second
- 16 bit internal resolution
- Output RS232 or RS 422, opto isolated
- Up to 32 devices on one bus (RS 422)
- Fully software controlled
- Communication via ASCII commands



Specification

Linearity	: < 0.003 % F.S.
Excitation Voltage	: 10 V DC with active sense circuit, driving up to 4 transducers with 350 Ohm bridges
Input Signal Range	: 2.0mV/V nominal. Other ranges available on request
Polarity	: Unipolar input range
Input Overload	: ± 12V
Maximum read out	: ± 99999
Sample rate	: 1000 samples per second
Resolution	: Up to 64,000 parts (16bit)
Dead Load	: Digitally compensated
Analogue Filter	: 12dB/octave e.g. 40dB/decade 2.5Hz
Digital Filter	: 36dB/octave e.g. 120dB/decade 10Hz
Calibration	: Software calibration and set up
Communication	: RS232 or RS422 full duplex
Baudrate	: 9k6, 19k2, 38k4 or 57k6
Bus	: Up to 32 devices on one bus
Temperature Effect Zero	: < 3.5ppm/°C
Temperature Effect Span	: < 150nV/°C
Temperature Range	: -10°C to +40°C
Storage Temperature Range	: -25°C to +80°C
Housing	: Polyester IP65 wall mounting
Cable Entries	: 3 off plastic PG9 glands
Weight	: Approx. 0.9 kg
Power Supply	: 15 - 28 V DC

DSSGM500-3, 12/98



TECHNIQUES LIMITED

Tel. +44 (0)1446 771185 Fax +44 (0)1446 771186

Precision Load cells
Accessories and Mountings
Measuring Instruments and Systems

SGM500

1000 samples per second

Power supply 15-28 VDC

Will drive 4 off 350 Ohm load cells

RS232 and RS422 computer interfaces

4 off power FET relay outputs (setpoints)

4 off remote logic inputs

16 bit ADC

Up to 32 devices on one bus (RS422)

Simple ASCII protocol

Fully software controlled