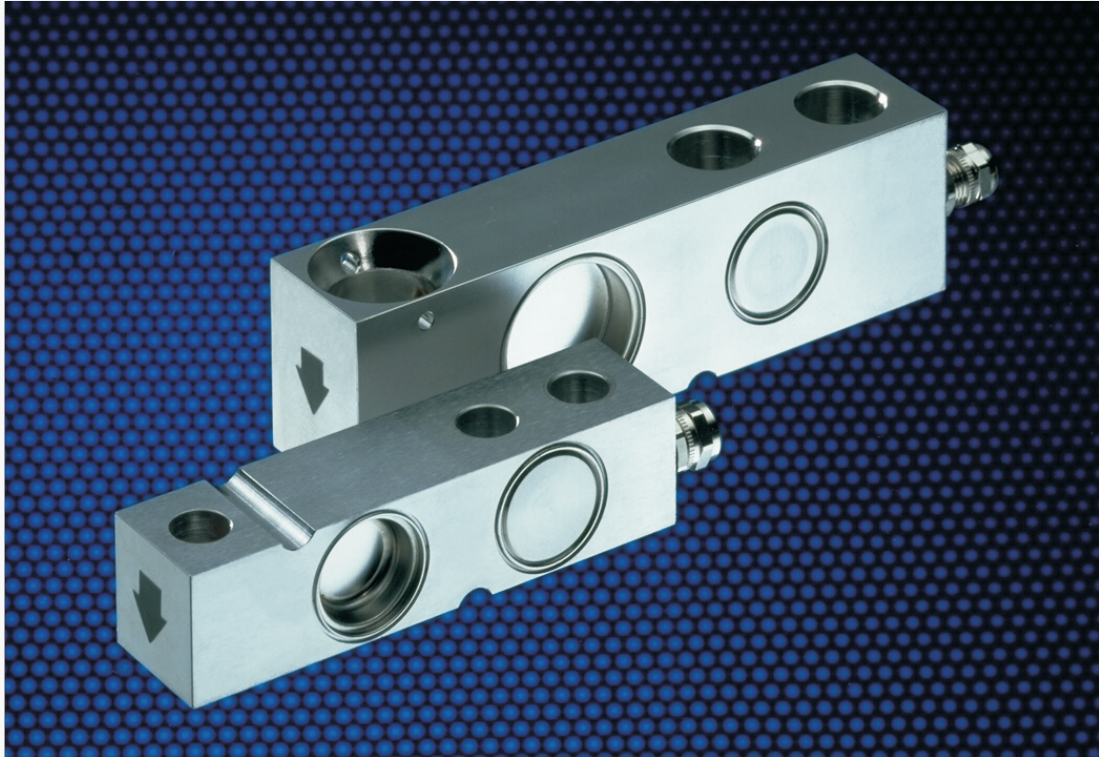


3510

Shearbeam Load Cell

SENSOR
TECHNIQUES LIMITED



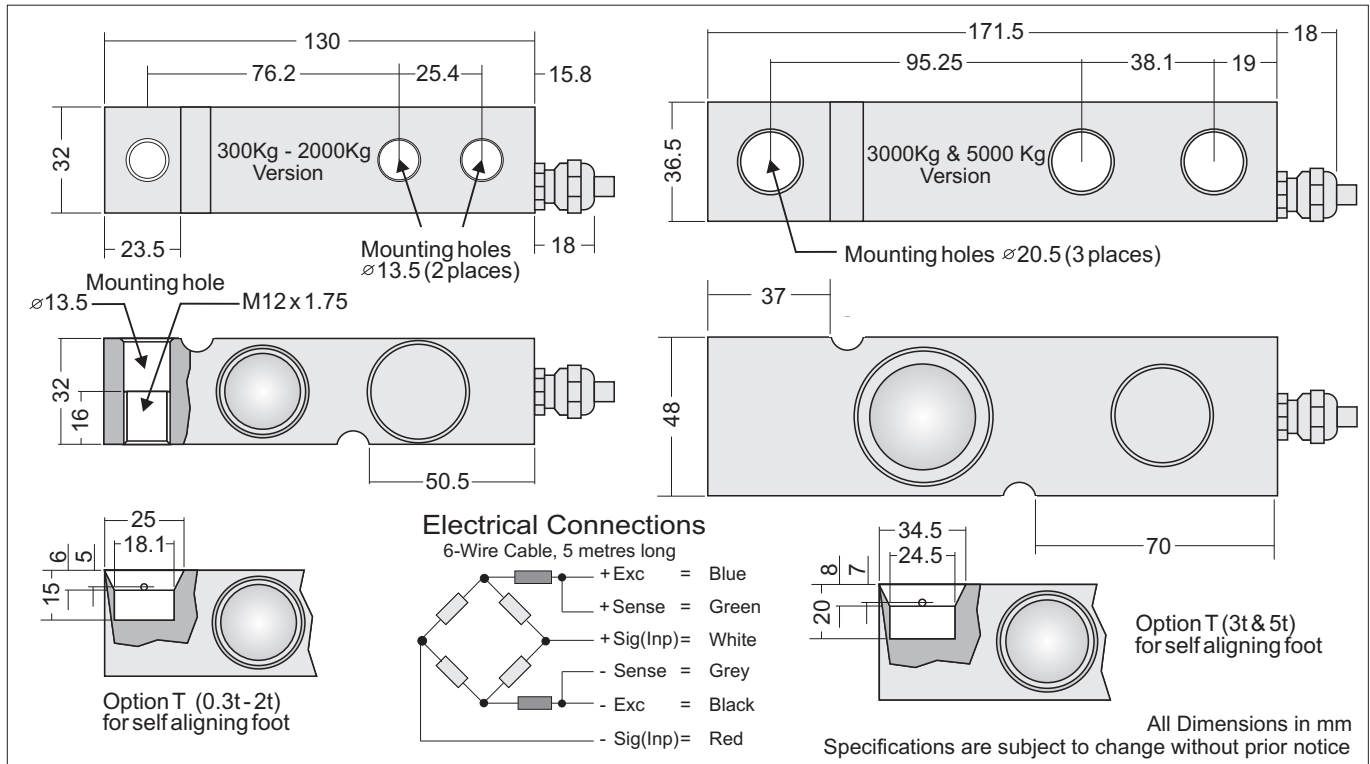
Shearbeam Load Cell, Model 3510

- High accuracy and long term stability
- Output signal rationalised (2 mV/V \pm 0.1%)
- 'T' end option current matched as standard
- Available in capacity ranges from 300kg to 5000kg
- Ideal for harsh environments & Industrial applications
- Stainless steel construction hermetically sealed IP68
- Optional ATEX approval available
- 6-wire sense technique with double shielded cable
- Optional live end hole for low profile loading foot

GRADE		C1	C3	C6
Number of Load Cell Intervals	n (max)	1000	3000	6000
Minimum Utilisation	% Rated Cap.	30	25	40
Minimum Verification Interval	Vmin=Emax/.	3333	12000	15000
Total Error	% Appl. Load	0.050	0.020	0.010
Zero Return after 30 mins	% Appl. Load	0.050	0.017	0.008
Temperature Effect on : Span	%Appl. Ld./10K	0.040	0.010	0.006
Zero	%ORL/10K	0.035	0.023	0.024
Output at Rated Load (ORL)	mV/V	2.00 (UR matched 2.02)		
Output at Rated Load Tolerance	%	± 0.1		
Input Impedance	Ohm	380 ± 10		
Output Impedance	Ohm	350 ± 3		
Recommended Supply Voltage	V	10		
Compensated Temp. Range	°C	-10 to +40		
Operating Temperature Range	°C	-30 to +70		
Deflection	mm	< 0.4		
Safe Overload	% Rated Cap.	150		
Maximum Overload	% Rated Cap.	200		
Ultimate Overload	% Rated Cap.	300		
Cable Length	m	5		
Construction		Stainless Steel		
Environmental Protection		IP68		
Rated Capacities (Emax)	Kg	300, 500, 1000,1200, 2000, 3000, 5000		

NMI - Certificate TC2272, OIML-R60. C6 grade only available for capacities 300-1200kg.

Dimensions



DS3510-4, 09/10